



Mediterranean Temporary Ponds (MTP) and its surrounding area offers the ideal environment for many plants, birds and macroinvertebrate species. Some of this biota are rare, others are endemic, or in danger and all of them contribute in the significance of this habitat. After frequent observations and samplings, several species have been found in the particular MTPs and some indicative ones are presented in this leaflet.



Land Quillwort (*Isoetes histrix*)

Terrestrial perennial plants with a short stem forming a kind of underground bulb bearing roots, and many fronds ("leaves") arranged in rosettes at ground level. The fronds are narrow and tough, are dark green, 4 to 10 cm long, all fertile (sporophylls), hollowed out at the base on the inner (upper) side to form a pit containing a sporangium. The outer fronds carrying macrosporangia, covered in a partial veil. Macrosporangia containing macrospores (females) and microsporangia containing microspores (males). The most suitable habitats are Mediterranean swards, wet in winter and the beginning of spring and very dry in summer.

These habitats types are located on the edge of temporary pools and streams.



Centaurium pulchellum

An annual plant, 2-20cm long, with rosette of leaves at its base. Stem branches, as a rule, below the middle. Leaves ovate or ovate-lanceolate, acute, up to 1.5cm. flowers pink. Corolla with 5 lobes, or in the very small plants. Habitat: Meadows near the sea. Flowers pink.



Sea Daffodil (*Pancratium maritimum*)

A species of Amaryllidaceae native to the Mediterranean region and south-western Europe. It grows on coastal sands or just above the high tide mark. Other vernacular names are Sand Daffodil and Sand Lily. The Latin *maritimum* means "on the sea-coast". *P. maritimum* is a bulbous perennial with a long neck and glaucous, broadly linear leaves, evergreen, but the leaves often die back during hot summers. Scape to 40 cm. Flowers 3-15 in an umbel, to 15 cm long, white. Corona two-thirds as long as the tepals. The flowers have an exotic lily scent. Flowering in August to October.



Common Kestrel (*Falco tinnunculus*)

A bird of prey species belonging to the kestrel group of the falcon family Falconidae. It has a wingspan of 70-80 cm. The average adult male weighs around 155 g with the adult female weighing around 190 g. This is a diurnal bird and prefers an "open country" habitat such as fields, heaths, and marshland. When hunting, the Common Kestrel hovers about 10-20 m above the ground searching for prey. Once prey is sighted, the bird makes a short, steep dive toward the target. Kestrels prey upon small mammals, including voles, as well as small birds, large insects, earthworms, and frogs. Like most birds of prey, Kestrels have keen eyesight enabling them to spot small prey from a distance. Kestrels require the equivalent of 4-8 voles a day, depending on energy expenditure (time of the year, amount of hovering, etc). They have been known to catch several voles in succession and to store some for later consumption.



Meadow Pipits (*Anthus pratensis*)

In most parts of northern Europe this is the commonest pipit. Indeed, in many areas of open country it will be the most numerous bird of all. It can be distinguished from a Tree Pipit by its duller darker head in which there seems to be more of a pale ring around the eye rather than a stripe running through it. More convincingly though, notice how the thick black streaks continue all the way down to the flanks almost to the undertail. If in doubt, wait for its call. They feed typically on insects. Breeds on open moorland and rough grassland. Winters on marshes, in stubble fields and rough grassland. Also a common passage migrant and winter visitor from northern Europe from August-May.



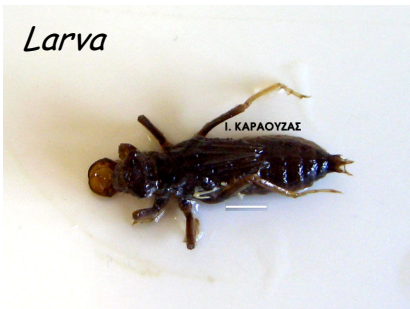
Yellow Wagtail (*Motacilla flava*)

Motacilla flava 16 cm. Very slender, long legs; yellow below. Long tail is black with white sides; constantly wagged. Immature: Whitish below; throat outlined in black. Flight undulating. Voice: A loud, musical *tsouEEP*. Song, *tsip-tsip-tsip*. Habitat: Willow scrub on tundra, marshy country, wetlands.



Wheel snails (*Planorbidae*)

Generally referred to as "Wheel Snails", "Orb Snails", or "Ramshorn snails", the Planorbidae are the largest family of aquatic pulmonate gastropods, with species present on all continents and most islands. They are sinistral in their orientation, in spite of the fact that some may appear dextral due to the spire being sunken more than the umbilicus. Many of these species harbor the larvae of parasitic worms, particularly southern and Old-World taxa. Some are patelliform or limpet-like.



Larva

I. KAPAOYZAI



Adult

Clubtail Dragonflies (*Onychogomphus sp.*)

Found mostly in streams, lakes (shores) and pools. Larves usually "hide" in the bed and the adults on plants. The major characteristic of adult's morphology is the yellow stripes and dots along the black body. Feed with other invertebrates, even small fishes.

<Contribute to the preservation of Mediterranean Temporary Ponds>

Institute of Inland Waters - Hellenic Center for Marine Research, www.hcmr.gr

